

22<sup>nd</sup> annual

# PRODUCTION

# sale

**RIDL**  
**ANGUS**  
DICKINSON, ND



Tuesday  
**MAR 5**

STOCKMEN'S WEST  
DICKINSON, ND  
2:00PM (MST)





# RIDL ANGUS



DICKINSON, ND

Tuesday  
MAR 5

STOCKMEN'S WEST  
DICKINSON, ND  
2:00PM (MST)

22<sup>nd</sup> Annual

# PRODUCTION

sale

## GENERAL INFORMATION

### SALE LOCATION:

Stockmen's West Livestock  
Dickinson, ND | 701-225-8145

### SALE DAY PHONE:

701-225-8145  
701-260-2579 (Rusty) | 701-260-8277 (Arthur)

### PRE-SALE INSPECTION:

Bulls can be viewed at Ridl Farms prior to March 2nd and at Stockmen's West thereafter. Bulls will be penned in the large pens to the south-east Saturday and Sunday and penned Monday afternoon.

### HEALTH:

All bulls have been given 7 way Somnus, foot rot vaccine, Pinkeye vaccine, and Vista 5 and poured. Health papers will be furnished for bulls going out of state. All bulls selling have passed a complete breeding soundness exam and are guaranteed to be breeders.

### SEMEN INTEREST:

Ridl Angus has the right to retain 1/3 semen interest in any bulls sold.

### GENETIC DEFECTS:

All bulls selling are free of any known genetic defects by pedigree or test.

### MAIL BIDS:

Anyone unable to attend the sale may call or send bids to any of the owners, ringmen, auctioneer or new this year bid online at [www.dvauction.com](http://www.dvauction.com)

### DELIVERY:

Haul your bull home sale day and receive a 75\$ per head discount. Ridl Angus will offer free delivery on bulls within 300 miles from the farm and delivery will take place promptly after the sale. Unless other arrangements are made.

### FEEDING ARRANGEMENTS:

We will "feed um till you need um" at no extra cost. Bulls returning to Ridl Farms for wintering will be handled and cared for as if they were our own but are the property of the buyer with the buyer taking all risk and responsibility promptly after the sale. Ridl Angus will not be responsible for bulls if injury occurs. Injury is an insurable risk and Ridl Angus will not be held responsible for any injury. We highly suggest insuring all bulls. Bulls wintered at Ridl Farms are to be picked up at the farm. Please call ahead to make loading arrangements.

### FEED:

Bulls were feed a ration of chopped hay, 4lbs corn, 4lbs wheat midds, corn silage and mineral supplements. We strive for a 3.5lb average daily gain.

### TERMS:

Bulls sell under the terms and conditions of the American Angus Association. Terms are available at [www.angus.org](http://www.angus.org)

### LUNCH:

FREE BEEF LUNCH STARTS AT 12:00

### AUCTIONEER:

Seth Weishaar 605-210-1124

### RINGMEN

Vern Frey 701-721-0344  
Frey Livestock Services



Dennis Ginkens 406-670-9839  
Tri Stat Livestock News

Scott Ressler 701-391-7310  
North Dakota Stockmen's Association

## DVAuction

[www.dvauction.com](http://www.dvauction.com)

Watch & Bid online for FREE!

Can't make the sale?

Let DVAuction bring the sale to you!

Busy during the sale?

Let DVAuction represent your bid!

Visit [www.dvauction.com](http://www.dvauction.com) and Register!

It's as easy as 1, 2, 3...

1. Create an account at [www.dvauction.com](http://www.dvauction.com) under the "create new account" tab
2. Apply for bidding by clicking "apply for bidding" in the upper left corner of your screen, at least 24 hours prior to the auction
3. Tune into the sale and make your purchases!

For General Questions Please Contact Our Office:  
(402) 316-5460 or [support@dvauction.com](mailto:support@dvauction.com)

\*High Speed Internet Access Required

RUSTY, ALYSHA, EMALY  
& BETTY JO RIDL  
701-260-2579  
[RR\\_921@HOTMAIL.COM](mailto:RR_921@HOTMAIL.COM)



[WWW.RIDLANGUS.COM](http://WWW.RIDLANGUS.COM)

ARTHUR & CINDI RIDL  
701-260-8277  
[RID-LAC@HOTMAIL.COM](mailto:RID-LAC@HOTMAIL.COM)



# **RIDL ANGUS**



## **DICKINSON, ND**

### **Cattlemen:**

It is our pleasure to welcome you to our 22nd annual production sale. Sale will be held Tuesday March 5th at Stockmen's West in Dickinson ND starting at 2:00MDT (after the stock cow sale) We will offer 65 yearling angus bulls sired by some of the breed leading sires for growth and calving ease.

It is our goal to produce good, high volume, growthy cattle with high maternal traits and good dispositions. The culls are raised on mothers' milk and grass alone, no creep feed. The bulls were weaned September 22nd and started slowly on chopped hay, corn silage, and distillers; slowly increasing the grain to achieve a 3.5lb per day gain. Bringing the bulls along slowly helps insure longevity and breeding soundness.

Most of the bulls selling have DNA enhanced EPD's by the Angus GS test. The bulls are freeze branded and will pass a breeding soundness exam. Again, this year we will offer the same feeding arrangements as we have in the past or we will be happy to deliver your bull or haul your purchases home sale day and receive a \$100 per bull discount. New this year we are going to have the sale live on [www.dvauction.com](http://www.dvauction.com) and they will also host the videos of the bulls and if you are unable to attend the sale you can bid online. Videos and scrotal measurements will be available as soon as they are ready on [dvauction](http://dvauction.com) and available sale day.

Feel free to stop out at the farm and go through the bulls anytime until Saturday March 2nd and Stockmen's West thereafter. Saturday and Sunday the bulls will be penned to the southeast in the big pens and under the roof thereafter. We thank you for your interest and look forward to working with you. Check out our website at [www.ridlangus.com](http://www.ridlangus.com) and [www.dvauction.com](http://www.dvauction.com) for videos and updates.

Thank You

Ridl Angus

Arthur and Cindi Ridl

Rusty, Aly, Emaly, Betty Jo Ridl

11425 34th St SW Dickinson ND 58601

701-260-8277-Art

701-260-2579-Rusty



**Arthur and Cindi Ridl**



**Rusty, Alysha and Emaly Ridl**



**Emaly and Betty Jo Ridl**





## Driving the science of better breeding

There's little room for error in the cattle business. Producers need the most advanced information to make smart selection decisions, and Angus Genetics Inc. (AGI) provides it through genomic-enhanced expected progeny differences (GE-EPDs).

GE-EPDs have become the industry standard for herd improvement, building on decades of science-backed genetic evaluation tools originated and maintained through the American Angus Association®, home to the largest and ever-growing single-breed beef cattle database.

EPDs that traditionally contained all pedigree, performance and progeny information now also include results from available genomic, or DNA, tests. Breeders who use genomic technology give buyers access to AGI-generated GE-EPDs that provide:

Increased predictability and decreased risk for young and unproven animals due to enhanced accuracy of EPDs

Better characterization of genetics for difficult-to-measure performance traits (such as carcass traits, maternal traits and feed efficiency)

The ability to make more rapid progress for traits that are important to you, due to:

- more accurate selection
- easier identification of genetic outliers
- the ability to propagate young animals with confidence earlier in their lives

In fact, GE-EPDs on unproven animals have the same amount of accuracy as if they had recorded 8-33 calves, depending on the trait. That's valuable insight, offered regularly through the breed's weekly national cattle evaluation.

Trait	Progeny Equivalent	Trait	Progeny Equivalent
Calving Ease Direct	28	Milk	33
Birth Weight	21	Mature Weight	11
Weaning Weight	26	Mature Height	8
Yearling Weight	21	Carcass Weight	9
Dry Matter Intake	8	Yearling Height	11
Scrotal Circumference	13	Carcass Marbling	9
Docility	10	Carcass Ribeye	12
Heifer Pregnancy	14	Carcass Fat	10

### How do you know if EPDs are genomic-enhanced?

Ask your breeder, refer to the registration paper, or look for the AGI GE-EPD logo, Angus GS™ powered by partner Neogen GeneSeek or the HD50k by partner Zoetis. These images indicate animals for which low-density or high-density genomic testing has been conducted and incorporated by AGI into GE-EPDs



[www.angus.org](http://www.angus.org)



# American Angus Association® Selection Tools

**Expected Progeny Difference (EPD)**, is the prediction of how future progeny of each animal are expected to perform relative to the progeny of other animals listed in the database. EPDs are expressed in units of measure for the trait, plus or minus. Interim EPDs may appear on young animals when their performance has yet to be incorporated into the American Angus Association National Cattle Evaluation (NCE) procedures. This EPD will be preceded by an "I", and may or may not include the animal's own performance record for a particular trait, depending on its availability, appropriate contemporary grouping, or data edits needed for NCE.

**Accuracy (ACC)**, is the reliability that can be placed on the EPD. An accuracy of close to 1.0 indicates higher reliability. Accuracy is impacted by the number of progeny and ancestral records included in the analysis.

## GROWTH

**Calving Ease Direct (CED)**, is expressed as a difference in percentage of unassisted births, with a higher value indicating greater calving ease in first-calf heifers. It predicts the average difference in ease with which a sire's calves will be born when he is bred to first-calf heifers.

**Birth Weight EPD (BW)**, expressed in pounds, is a predictor of a sire's ability to transmit birth weight to his progeny compared to that of other sires.

**Weaning Weight EPD (WW)**, expressed in pounds, is a predictor of a sire's ability to transmit weaning growth to his progeny compared to that of other sires.

**Residual Average Daily Gain (RADG)**, feed efficiency expressed in pounds per day, is a predictor of a sire's genetic ability for postweaning gain in future progeny compared to that of other sires, given a constant amount of feed consumed.

**Yearling Weight EPD (YW)**, expressed in pounds, is a predictor of a sire's ability to transmit yearling growth to his progeny compared to that of other sires.

**Yearling Height EPD (YH)**, is a predictor of a sire's ability to transmit yearling height, expressed in inches, compared to the that of other sires.

**Scrotal Circumference EPD (SC)**, expressed in centimeters, is a predictor of the difference in transmitting ability for scrotal size compared to that of other sires.

**Docility (DOC)**, is expressed as a difference in yearling cattle temperament, with a higher value indicating more favorable docility. It predicts the average difference of progeny from a sire in comparison with another sire's calves.

## MATERNAL

**Heifer Pregnancy (HP)**, is a selection tool to increase the probability or chance of a sire's daughters becoming pregnant as first-calf heifers during a normal breeding season. A higher EPD is the more favorable direction, and the EPD is reported in percentage units.

**Calving Ease Maternal (CEM)**, is expressed as a difference in percentage of unassisted births with a higher value indicating greater calving ease in first-calf daughters. It predicts the average ease with which a sire's daughters will calve as first-calf heifers when compared to daughters of other sires.

**Maternal Milk EPD (Milk)**, is a predictor of a sire's genetic merit for milk and mothering ability as expressed in his daughters compared to daughters of other sires. In other words, it is that part of a calf's weaning weight attributed to milk and mothering ability.

**Mature Weight EPD (MW)**, expressed in pounds, is a predictor of the difference in mature weight of daughters of a sire compared to the daughters of other sires.

**Mature Height EPD (MH)**, expressed in inches, is a predictor of the difference in mature height of a sire's daughters compared to daughters of other sires.

**Cow Energy Value (\$EN)**, expressed in dollars savings per cow per year, assesses differences in cow energy requirements as an expected dollar savings difference in daughters of sires. A larger value is more favorable when comparing two animals (more dollars saved on feed energy expenses). Components for computing the cow \$EN savings difference include lactation energy requirements and energy costs associated with differences in mature cow size.

## CARCASS

The genetic evaluation produces a single set of EPDs for carcass weight, marbling score, Ribeye area and fat thickness. The units of measure are in carcass trait format and analyzed on an age-constant basis.

**Carcass Weight EPD (CW)**, expressed in pounds is a predictor of the differences in hot carcass weight of a sire's progeny compared to progeny of other sires.

**Marbling EPD (Marb)**, expressed as a fraction of the difference in USDA marbling score of a sire's progeny compared to progeny of other sires.

**Ribeye Area EPD (RE)**, expressed in square inches, is a predictor of the difference in ribeye area of a sire's progeny compared to progeny of other sires.

**Fat Thickness EPD (Fat)**, expressed in inches, is a predictor of the differences in external fat thickness at the 12th rib (as measured between the 12th and 13th ribs) of a sire's progeny compared to progeny of other sires.

## \$VALUE INDEXES

**\$Value indexes**, are multi-trait selection indexes to assist beef producers by adding simplicity to genetic selection decisions. \$Values are reported in dollars per head, where a higher value is more favorable. The \$Value is an estimate of how future progeny of each sire are expected to perform, on average, compared to progeny of other sires in the database if the sires were randomly mated to cows and if calves were exposed to the same environment.

**Weaned Calf Value (\$W)**, an index value expressed in dollars per head, is the expected average difference in future progeny performance for pre-weaning merit. \$W includes both revenue and cost adjustments associated with differences in birth weight, weaning direct growth, maternal milk, and mature cow size.

**Feedlot Value (\$F)**, an index value expressed in dollars per head, is the expected average difference in future progeny performance for postweaning merit compared to progeny of other sires.

**Grid Value (\$G)**, an index value expressed in dollars per head, is the expected average difference in future progeny performance for carcass grid merit compared to progeny of other sires.

**Quality Grade (\$QG)** represents the quality grade segment of the economic advantage found in \$G. \$QG is intended for the specialized user wanting to place more emphasis on improving quality grade. The carcass marbling (Marb) EPD, which is influenced by carcass marbling scores and ultrasound percent intramuscular fat (% IMF) measurements, contribute to \$QG.

**Yield Grade (\$YG)** \$YG represents the yield grade segment of the economic advantage found in \$G. \$YG is intended for the specialized user wanting to place more emphasis on red meat yield. It provides a multi-trait approach to encompass ribeye, fat thickness and weight into an economic value for red meat yield.

**\$G** combines both \$QG and \$YG, and may be the best carcass decision tool for focusing on quality and red meat yield simultaneously.

**Beef Value (\$B)**, an index value expressed in dollars per head, is the expected average difference in future progeny performance for postweaning and carcass value compared to progeny of other sires.





**Frey's Appearance - Reference Sire A**

**Reb A Freys Appearance**

Calved: 9/14/2014 18109016 Tattoo: 116B Bull

Young Dale Knock Out 134U  
**Young Dale Xcaliber 32X**  
**17992571** Brookmore Tibbie 222T

LaGrand MAF Antidote 5775 +  
 Young Dale Erica 26N  
 S A V 004 Density 4336 #+  
 Brookmore Tibbie 35N  
 G A R Grid Maker #+  
 S A V Abigale 0451  
 Mytty In Focus # [RDF]  
 F A R Missie 17P

S A V Bismarck 5682 #+ [RDF]  
**F A R Missie 62Y**  
**17113375** F A R Missie 48W #

BW	WW	Milk	YW	%IMF	REA	Fat	\$B
+3.2	+72	+18	+122	-.01	+.75	+.018	+144.27

- Lead bull of the 2016 National Western Grand Champion Pen of Three
- Among the top 2% of the Angus population for Scrotal Circumference EPD, this top 5% sire for Residual Average Daily Gain EPD ranks top 10% for the growth traits of Weaning Weight EPD, Yearling Weight EPD and hot Carcass Weight EPD for a top 10% \$Feedlot value index along with a top 10% Rib Eye area measure EPD.
- Appearance was the lead bull in the 2016 National Western Stock Show Grand Champion Pen of Three Bulls and the \$50,000 top-

selling bull in the Frey Angus Ranch Sale in North Dakota and he balanced a birth weight of 78 pounds with an adjusted 205-day weight of 870 pounds for a weaning ratio of 105 with an adjusted 365-day weight of 1,495 pounds for a yearling ratio of 104 with an impressive adjusted yearling scrotal circumference of 40 centimeters.

- Phenotypically flawless, he is acceptable in his frame size, correct in his structure, sound in his movement to be functional on the range and in the feedlot while still siring cattle with a desirable end-product and his sire offers outcross growth genetics from Barry Young's herd in Canada and combines great performance with that pleasing appearance that is so hard to find in one animal.
- Take advantage of the production look of Appearance with his good bone, big hip and power along with a great head, smooth shoulders and that special pattern that is hard to find.
- Appearance sired the class winning pen of 3 bulls at the 2018 National Western Stock Show
- Featured at Origen Bull Stud
- Semen Available for Sale
- Owned by: Ridl Angus, Points West Angus, Frey Angus





**Vermilion Roughrider - Reference Sire B**

**Reh B Vermilion Roughrider**

Calved: 2/12/2016 18508617 Tattoo: D131 Bull

S A V Priority 7283 #  
**S A V Privilege 3030**  
**17633557** S A V Blackcap May 1442 +

Connealy Dublin 8223 #  
**Vermilion Blackette 3139 #**  
**17546948** Vermilion Blackette 0138

S A V Final Answer 0035 # [RDF]  
 S A V Blackcap May 5530 #+  
 Rito 707 of Ideal 3407 7075 +  
 S A V Blackcap May 4136  
 Connealy Full Freight [RDF]  
 Black Rina of Conanga 69  
 TC Franklin 619 #+  
 Vermilion Blackette 7120 #

BW	WW	Milk	YW	%IMF	REA	Fat	\$B
+6	+80	+23	+139	+11	+60	-.003	+174.74

- Roughriders first calf crop ratioed 95 for birth, 100 for weaning, and 102 for yearling
- Roughrider reported a 923lb 205 adjusted weight with a 133-weaning ratio in a 563 head contemporary group at the Vermilion ranch and stayed on target to have a 1515lb yearling weight and 124 ratio
- Top 1% for Docility score EPD, Weaning Weight EPD and hot Carcass Weight EPD, top 2% for \$Feedlot value index, \$Weaned calf value index, Yearling Weight EPD and Residual Average Daily Gain EPD,

top 3% for \$Beef value index, top 4% for Scrotal Circumference EPD and better than breed average for Birth Weight EPD, maternal Milk EPD and Calving Ease Direct EPD

- Offering a three-generation sire stack of Vermilion Ranch herd sires chosen from three of America's most successful Angus breeding programs, this young sire offers great potential for efficient beef production and both his dam and his maternal great grandam are Pathfinder Dams in one of America's largest Angus herds.





# Baldrige Colonel C251

Calved: 4/23/2015 +18493773 Tattoo: C251 Bull

Hoover Dam #  
**baldrige Xpand x743 +**  
**16762739** Baldrige Queen S87

SydGen C C & 7 #  
Erica of Ellston C124 #  
Baldrige Navigator N5 #  
Baldrige Queen N914 +  
Sitz Upward 307R #  
Plainview Lassie 71B  
Baldrige Kaboom K243 KCF #  
Baldrige Isabel P4527 +

Styles Upgrade J59 #  
**Baldrige Isabel Y69**  
**17149410** Baldrige Isabel T935 +

BW	WW	Milk	YW	%IMF	REA	Fat	\$B
+1.8	+62	+19	+116	+7.5	+1.04	-.034	+145.50



**Baldrige Colonel C251 - Reference Sire C**



# 3F Epic 4631

Calved: 1/25/2014 17950219 Tattoo: 4631 Bull

Connealy Final Product #  
**Varilek Product 2010 04**  
**17310103** Varilek Pearl 0006 014

Connealy Product 568  
Ebonista of Conanga 471 #  
S A V Bismarck 5682 #+ [RDF]  
Varilek Pearl 8115 825  
Basin Franchise P142 #  
EF Everelda Entense 6117 +  
EXAR New Look 2971 #+  
PPC Classic Blackcap 4980

EF Complement 8088 #  
**Zebo Queen 1072**  
**17056212** EXG Blackcap 6247 PPC [RDF]

BW	WW	Milk	YW	%IMF	REA	Fat	\$B
-.2	+86	+25	+155	+8.2	+4.6	+0.066	+185.66



**3F Epic 4631 - Reference Sire D**



# Plattemere Weigh Up K360

Calved: 2/08/2010 16692552 Tattoo: K360 Bull

Connealy Onward #  
**Sitz Upward 307R**  
**#14963730** Sitz Henrietta Pride 81M

Connealy Lead On #  
Altune of Conanga 6104  
Sitz Value 7097 #  
Sitz Henrietta Pride 1370  
G A R Precision 1680 #  
G A R Ext 4927 +  
Bon View New Design 1407 #  
Barbara of Plattemere 286

G A R Retail Product #  
**Barbara of Plattemere 337**  
**#16274856** Barbara of Plattemere 311

BW	WW	Milk	YW	%IMF	REA	Fat	\$B
+1.6	+76	+25	+138	+5.3	+7.8	-.047	+171.34



**Plattemere Weigh Up K360 - Reference Sire E**



# Mytty Natural

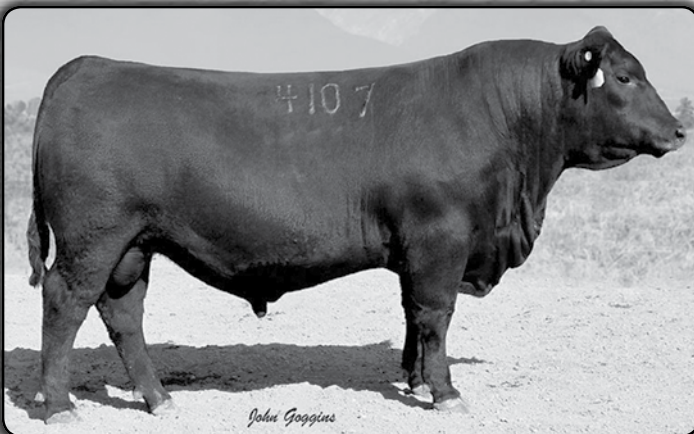
Calved: 5/13/2014 17935475 Tattoo: 4107 Bull

Rito 707 of Ideal 3407 7075 +  
**S A V Resource 1441 #+**  
**17016597** S A V Blackcap May 4136

R R Rito 707 #  
Ideal 3407 of 1418 076  
S A V 8180 Traveler 004 # [RDF]  
S A V May 2397 #+  
Connealy Thunder # [RDF]  
Sitz Everelda Entense 5038 +  
Rito 4L6 of 2536 208 +  
GDAR Primrose Lady 515

Mytty Thunderstruck +  
**Mytty Primrose Lady 1025**  
**16902068** Mytty Primrose Lady U267

BW	WW	Milk	YW	%IMF	REA	Fat	\$B
+4.0	+79	+30	+148	+2.0	+1.11	+0.031	+165.13



**Mytty Natural - Reference Sire F**





# K C F Bennett The Rock A473

Calved: 10/8/2013 17849954 Tattoo: A473 Bull

Nichols Extra K205 #  
**K C F Bennett Southside**  
**16430862** K C F Miss 208 S11 #

Nichols Extra H6 #  
Nichols Black Heiress F346  
Bon View New Design 208 #  
K C F Miss 338 P14 #  
Rito 112 of 2536 Rito 616 #+  
L B 6807 Isabel 339  
C A Future Direction 5321 #  
Breasha of Conanga 1251

GAR-EGL Protege #+  
**K C F Miss Protege W148 +**  
**16430913** Breela of Conanga 3991

BW	WW	Milk	YW	%IMF	REA	Fat	\$B
+1.7	+79	+20	+141	+1.26	+53	+0.06	+172.92



**KCF Bennett The Rock A473 - Reference Sire G**



# Isaak Identity 6013

Calved: 2/26/2016 18738123 Tattoo: 6013 Bull

Sitz Upward 307R #  
**Koupals B&B Identity #**  
**16710463** B&B Erica 605 #

Connealy Onward #  
Sitz Henrietta Pride 81M  
G A R Exaltation 3144 #+  
B&B Erica 4064  
S A V Final Answer 0035 # [RDF]  
H A R B Black Lady 375 J H #  
L T 598 Bando 9074 #  
Isaak Merle 260

HARB Pendleton 765 J H #  
**Isaak Merle 900**  
**17194796** Isaak Merle 508

BW	WW	Milk	YW	%IMF	REA	Fat	\$B
-.9	+57	+27	+94	+69	+23	+0.058	+149.31



**Koupals B&B Identity - Sire of Reference Sire H**



# JAR Cash 993 420

Calved: 1/26/2014 +18022477 Tattoo: 420 Bull

Sitz Dash 10277 # [DDF]  
**Barstow Cash # [DDF]**  
**17145326** Barstow Queen W16 [DDF]

Sitz Upward 307R # [DDF]  
Sitz Everelda Entense 2665 +  
S A V Final Answer 0035 #  
RCA Queen R42  
Hoff First Edition 058 242 #  
DDR Lady Elixir 3020  
WK Designers Pride 1612 #+ [DDC]  
Grubbs Miss Countess 364 +

DDR First Edition 6027  
**JAR Miss Countess 6155 993**  
**16525585** JAR Miss Countess 364 6155 #

BW	WW	Milk	YW	%IMF	REA	Fat	\$B
+2.0	+62	+27	+109	+18	+71	+0.006	+122.74



**Barstow Cash - Sire of Reference Sire I**



# Prairie Pride Market Rally

Calved: 3/1/2015 18397204 Tattoo: 5009 Bull

S A V Final Answer 0035 # [RDF]  
**Connealy Capitalist 028 # [RDF]**  
**16752262** Prides Pita of Conanga 8821

Sitz Traveler 8180 #  
S A V Emulous 8145  
C R A Bextor 872 5205 608 #  
Prides Trav of Conanga 6499  
Mytty In Focus # [RDF]  
Mogck Black Lass 2065  
Woodhill Supreme #+  
Curtis Elbena Supreme 27E

MOGCK Sure Shot #  
**Prairie Pride Elbena 3065**  
**18390972** Prairie Pride Elbena 0010

BW	WW	Milk	YW	%IMF	REA	Fat	\$B
+1.1	+54	+19	+86	-.03	+80	+0.027	+107.88



**Connealy Capitalist 028 - Sire of Reference Sire J**





**Ridl Roughrider 820 - Lot 1**

**Lot 1** **Ridl Roughrider 820**

Calved: 1/17/2018 19142047 Tattoo: 820 Bull  
 S A V Privilege 3030 S A V Priority 7283 #  
**Vermilion Roughrider** S A V Blackcap May 1442 +  
**18508617** Vermilion Blackette 3139 #  
 Apex Windy 078 #  
**Ridl Katrina 326** H A R B Windy 702 JH #  
**17661935** RF Katrina 025 Apexette Lucy 6037  
 Connealy Packer 547 #  
 R F Katrina 703

BW	WW	Milk	YW	%IMF	REA	Fat	\$B
+1.1	+76	+31	+133	+57	+53	-.003	+179.51
CED	BW	205 ADJ	NR	DAM NR	365 ADJ	YR	\$W
+4	91	813	113	4-102	1549	113	+81.92

• Herd bull prospect, heaviest actual weaning weight that we have ever had at 916



**Ridl Appearance 816 - Lot 3**

**Lot 3** **Ridl Appearance 816**

Calved: 1/16/2018 19142029 Tattoo: 816 Bull  
 Young Dale Xcaliber 32X Young Dale Knock Out 134U  
**Freys Appearance** Brookmore Tibbie 222T  
**18109016** F A R Missie 62Y S A V Bismarck 5682 #+ [RDF]  
 PA Fortitude 2500 F A R Missie 48W #  
**Ridl Miss Traveler 641** GAR-EGL Protege #+  
**18526958** RF Miss Traveler 922 # G G Clara 0171  
 Sitz Upward 307R #  
 R F Miss Traveler 147 #

BW	WW	Milk	YW	%IMF	REA	Fat	\$B
+2.9	+70	+18	+128	+54	+1.06	-.014	+179.15
CED	BW	205 ADJ	NR	DAM NR	365 ADJ	YR	\$W
-3	81	742	103	1-103	1507	110	+48.74

• Actual weaning weight of 760



**Ridl Appearance 809 - Lot 2**

**Lot 2** **Ridl Appearance 809**

Calved: 1/13/2018 19142024 Tattoo: 809 Bull  
 Young Dale Xcaliber 32X Young Dale Knock Out 134U  
**Freys Appearance** Brookmore Tibbie 222T  
**18109016** F A R Missie 62Y S A V Bismarck 5682 #+ [RDF]  
 A A R Ten X 7008 S A # F A R Missie 48W #  
**Ridl Pamela 306 #** Mytty In Focus # [RDF]  
**17536239** RF Pamela 140 A A R Lady Kelton 5551 #  
 Sitz Upward 307R #  
 R F Pamela 613

BW	WW	Milk	YW	%IMF	REA	Fat	\$B
+3.0	+77	+23	+130	+55	+75	+0.025	+171.71
CED	BW	205 ADJ	NR	DAM NR	365 ADJ	YR	\$W
+1	77	829	116	3-109	1495	109	+65.47

• Footnotes to go here



**Ridl Appearance 881 - Lot 4**

**Lot 4** **Ridl Appearance 881**

Calved: 2/7/2018 19142035 Tattoo: 881 Bull  
 Young Dale Xcaliber 32X Young Dale Knock Out 134U  
**Freys Appearance** Brookmore Tibbie 222T  
**18109016** F A R Missie 62Y S A V Bismarck 5682 #+ [RDF]  
 Tokach Update 9009 # F A R Missie 48W #  
**Tokach Mc Henry Miss 2175 #** Sitz Upward 307R #  
**17369341** Tokach Mc Henry Miss 8258 Tokach Black Lady 4100  
 TC Grid Topper 355 #+  
 Tokach Mc Henry Miss 5420

BW	WW	Milk	YW	%IMF	REA	Fat	\$B
+2.8	+71	+24	+119	+43	+55	+0.007	+166.79
CED	BW	205 ADJ	NR	DAM NR	365 ADJ	YR	\$W
+6	86	729	102	5-103	1396	102	+61.75

• Actual weaning weight of 780





**Ridl Colonel 887 - Lot 5**

Lot 5

## Ridl Colonel 887

Calved: 2/8/2018 19146985 Tattoo: 887 Bull

baldridge Xpand x743 +  
**Baldridge Colonel C251 +**  
**18493773** Baldridge Isabel Y69

Sitz Upward 307R #  
**RF Miss Traveler 119 #**  
**17032842** R F Miss Traveler 147 #

Hoover Dam #  
 Baldrige Queen S87  
 Styles Upgrade J59 #  
 Baldrige Isabel T935 +  
 Connealy Onward #  
 Sitz Henrietta Pride 81M  
 L A Traveler 479  
 Carlson Nightshift 3968

BW	WW	Milk	YW	%IMF	REA	Fat	\$B
+2.7	+66	+28	+123	+21	+87	-.049	+141.87
CED	BW	205 ADJ	NR	DAM NR	365 ADJ	YR	\$W
-2	86	770	107	6-106	1448	105	+63.04

- Posted actual weaning weight of 822



**Ridl Paycheck 8214 - Lot 7**

Lot 7

## Ridl Paycheck 8214

Calved: 2/25/2018 19296269 Tattoo: 8214 Bull

Basin Payweight 1682 +  
**Basin Paycheck 5249**  
**18184147** Basin Lucy 3150

Koupals B&B Identity #  
**Isaak blackbird 408**  
**18160094** Isaak Blackbird 132

Basin Payweight 006S #+  
 21AR O Lass 7017  
 Basin Rainmaker P175 #  
 Basin Lucy 1667 +  
 Sitz Upward 307R #  
 B&B Erica 605 #  
 S A V Mandan 5664 #+  
 Isaak Krug Blackbird 151

BW	WW	Milk	YW	%IMF	REA	Fat	\$B
+5	+72	+35	+121	+92	+74	+039	+166.03
CED	BW	205 ADJ	NR	DAM NR	365 ADJ	YR	\$W
+5	88	785	107	3-101	1401	104	+86.97

- Suitable for heifers posted highest \$W and highest Marb EPD actual weaning weight 780



**Ridl Roughrider 842 - Lot 6**

Lot 6

## Ridl Roughrider 842

Calved: 1/29/2018 19142042 Tattoo: 842 Bull

S A V Privilege 3030  
**Vermilion Roughrider**  
**18508617** Vermilion Blackette 3139 #

Connealy Confidence 0100 #  
**TNT Eline 449**  
**17938462** Tokach Eline 2207 #

S A V Priority 7283 #  
 S A V Blackcap May 1442 +  
 Connealy Dublin 8223 #  
 Vermilion Blackette 0138  
 Connealy Tobin  
 Becka Gala of Conanga 8281  
 WMR Timeless 458 #  
 Tokach Eline 8235

BW	WW	Milk	YW	%IMF	REA	Fat	\$B
+1	+82	+20	+140	+13	+89	+042	+168.64
CED	BW	205 ADJ	NR	DAM NR	365 ADJ	YR	\$W
+13	64	767	107	3-104	1481	108	+77.44

- Suitable for heifers, big spread EPD Bull, actual weaning weight of 826

Lot 8

## Ridl Epic 806

Calved: 1/12/2018 19146959 Tattoo: 806 Bull

Varilek Product 2010 04  
**3F Epic 4631**  
**17950219** Zebo Queen 1072

DL Consensus 462  
**Ridl Miss Sue 458**  
**17805573** RF Miss Sue 040 #

Connealy Final Product #  
 Varilek Pearl 0006 014  
 EF Complement 8088 #  
 EXG Blackcap 6247 PPC [RDF]  
 Connealy Consensus 7229 #  
 DL Lady Ida 1018 #  
 Sitz Upward 307R #  
 R F Miss Sue 019 #

BW	WW	Milk	YW	%IMF	REA	Fat	\$B
+2.1	+75	+31	+137	1+.67	1+.44	1+.033	+173.16
CED	BW	205 ADJ	NR	DAM NR	365 ADJ	YR	\$W
+8	88	762	106	3-111	1492	109	+66.41

- NHC, actual weaning weight 850



Free Help





Ridl Appearance 817 - Lot 9

**Lot 9** **Ridl Appearance 817**

Calved: 1/16/2018 19142031 Tattoo: 817 Bull  
 Young Dale Xcaliber 32X Young Dale Knock Out 134U  
**Freys Appearance** Brookmore Tibbie 222T  
**18109016** F A R Missie 62Y S A V Bismarck 5682 #+ [RDF]  
 F A R Missie 48W #  
 WMR Hero 321 SRA 2418 of RR 303  
**Ridl Lassie 5103** WMR Pride 722  
**18115431** RF Lassie 105 # DCC Franklin 916  
 RF Lassie 913

BW	WW	Milk	YW	%IMF	REA	Fat	\$B
+4.2	+80	+30	+139	+23	+68	+013	+181.28
CED	BW	205 ADJ	NR	DAM NR	365 ADJ	YR	\$W
-1	92	839	117	2-112	1575	115	+69.77

• Herd bull prospect with an actual weaning weight of 906



Ridl Roughrider 834 - Lot 11

**Lot 11** **Ridl Roughrider 834**

Calved: 1/25/2018 19142038 Tattoo: 834 Bull  
 S A V Privilege 3030 S A V Priority 7283 #  
**Vermilion Roughrider** S A V Blackcap May 1442 +  
**18508617** Vermilion Blackette 3139 # Connealy Dublin 8223 #  
 H A Image Maker 0415 #+ Vermilion Blackette 0138  
**Ridl Lady 237** Hero 6267 of R R 2418 #  
**17293327** R F Lady 708 H A Rito Blackcap 9038  
 K G Power Design #  
 R F Lady 360

BW	WW	Milk	YW	%IMF	REA	Fat	\$B
-3.2	+49	+28	+92	+14	+41	+014	+108.72
CED	BW	205 ADJ	NR	DAM NR	365 ADJ	YR	\$W
+17	72	709	99	5-100	1416	103	+53.81

• Heifer bull, actual weaning weight of 786



Ridl Roughrider 832 - Lot 10

**Lot 10** **Ridl Roughrider 832**

Calved: 1/23/2018 19142039 Tattoo: 832 Bull  
 S A V Privilege 3030 S A V Priority 7283 #  
**Vermilion Roughrider** S A V Blackcap May 1442 +  
**18508617** Vermilion Blackette 3139 # Connealy Dublin 8223 #  
 L A Traveler 479 Vermilion Blackette 0138  
**R F Princess Sue 713** H C Sitz Traveler 602 #  
**15878797** R F Princess Sue 319 # L A Queen Lass 206 #  
 Mc Bee WMR Super X 745 #  
 L A Princess Sue 826

BW	WW	Milk	YW	%IMF	REA	Fat	\$B
+1.5	+48	+26	+83	+25	+22	-.002	+117.56
CED	BW	205 ADJ	NR	DAM NR	365 ADJ	YR	\$W
+4	89	725	101	10-100	1434	104	+46.38

• Suitable for heifers posted 2nd highest CED EPD, actual weaning weight of 780



Ridl The Rock 81 - Lot 12

**Lot 12** **Ridl The Rock 81**

Calved: 1/5/2018 19146923 Tattoo: 81 Bull  
 K C F Bennett Southside Nichols Extra K205 #  
**K C F Bennett TheRock A473** K C F Miss 208 S11 #  
**17849954** K C F Miss Protege W148 + GAR-EGL Protege #+  
 PF Aviator 424 Breela of Conanga 3991  
**Ridl Blackbird 663** Musgrave Aviator  
**18526295** R F Blackbird 743 PF Queen Mother 135  
 A C Gold Miner 424  
 L A Blackbird 846

BW	WW	Milk	YW	%IMF	REA	Fat	\$B
+1.3	+73	+23	+136	+71	+30	+015	+167.40
CED	BW	205 ADJ	NR	DAM NR	365 ADJ	YR	\$W
+11	76	747	104	1-104	1449	106	+67.91

• Suitable for heifers, actual weaning weight of 784





## Lot 16 Ridl Roughrider 8108

Calved: 2/16/2018 19142044 Tattoo: 8108 Bull

S A V Privilege 3030  
**Vermilion Roughrider 18508617** Vermilion Blackette 3139 #  
 DL Consensus 462  
**Ridl Pamela 53 18115420** Ridl Pamela 308  
 S A V Priority 7283 #  
 S A V Blackcap May 1442 +  
 Connealy Dublin 8223 #  
 Vermilion Blackette 0138  
 Connealy Consensus 7229 #  
 DL Lady Ida 1018 #  
 A A R Ten X 7008 S A #  
 RF Pamela 123

BW	WW	Milk	YW	%IMF	REA	Fat	\$B
+1.7	+72	+28	+125	+66	+0.9	+0.49	+165.40
CED	BW	205 ADJ	NR	DAM NR	365 ADJ	YR	\$W
+8	87	776	108	2-100	1450	106	+70.23

- Suitable for heifers, actual weaning weight of 770

## Lot 13 Ridl Natural 8101

Calved: 2/10/2018 19148119 Tattoo: 8101 Bull

S A V Resource 1441 #+  
**Mytty Natural 17935475** Mytty Primrose Lady 1025  
 Tokach New Design 5412  
**Tokach Black Lady 1463 17079243** Tokach Black Lady 8430  
 Rito 707 of Ideal 3407 7075 +  
 S A V Blackcap May 4136  
 Mytty Thunderstruck +  
 Mytty Primrose Lady U267  
 Bon View New Design 878 #  
 Tokach Blackbird 3226  
 Tokach Right Time 338 4039  
 Tokach Black Lady 2717

BW	WW	Milk	YW	%IMF	REA	Fat	\$B
+3.4	+74	+29	+130	+20	+5.8	+0.39	+145.35
CED	BW	205 ADJ	NR	DAM NR	365 ADJ	YR	\$W
+7	104	839	117	5-105	1457	106	+70.88

- Growth bull posted an actual weaning weight of 890 on 9/22/18

## Lot 17 Ridl Colonel 8100

Calved: 2/10/2018 19146979 Tattoo: 8100 Bull

baldridge Xpand x743 +  
**Baldridge Colonel C251 + 18493773** Baldridge Isabel Y69  
 DL Consensus 462  
**Ridl Belle 540 18115411** RF Belle 127  
 Hoover Dam #  
 Baldridge Queen S87  
 Styles Upgrade J59 #  
 Baldridge Isabel T935 +  
 Connealy Consensus 7229 #  
 DL Lady Ida 1018 #  
 DCC Franklin 916  
 RF Belle 945

BW	WW	Milk	YW	%IMF	REA	Fat	\$B
+2.3	+69	+27	+124	+62	+8.6	-.020	+166.86
CED	BW	205 ADJ	NR	DAM NR	365 ADJ	YR	\$W
+2	84	712	99	2-105	1405	102	+67.41

## Lot 14 Ridl Epic 8202 [DDP]

Calved: 2/26/2018 19347327 Tattoo: 8202 Bull

Varilek Product 2010 04 [DDF]  
**3F Epic 4631 [DDF] 17950219** Zebo Queen 1072  
 B/R New Day 454 # [DDC]  
**Isaak Zara 425 18157796** Isaak Zara 909  
 Connealy Final Product # [DDF]  
 Varilek Pearl 0006 014  
 EF Complement 8088 # [DDF]  
 EXG Blackcap 6247 PPC [RDF-DDF]  
 Boyd New Day 8005 #+ [DDF]  
 B/R Ruby 1224 [DDC]  
 B C C Bushwacker 41-93 # [DDF]  
 Isaak Zara 521

BW	WW	Milk	YW	%IMF	REA	Fat	\$B
+1.5	+69	+25	+123	N/A	N/A	N/A	N/A
CED	BW	205 ADJ	NR	DAM NR	365 ADJ	YR	\$W
+7	76	764	104	3-99	1530	114	+57.75

- Suitable for heifers, actual weaning weight of 756

## Lot 18 Ridl Epic 801

Calved: 1/11/2018 19146936 Tattoo: 801 Bull

Varilek Product 2010 04  
**3F Epic 4631 17950219** Zebo Queen 1072  
 R B Tour Of Duty 177 + [RDF]  
**Ridl Blanche 615 18526880** Ridl Blanche 322 #  
 Connealy Final Product #  
 Varilek Pearl 0006 014  
 EF Complement 8088 #  
 EXG Blackcap 6247 PPC [RDF]  
 Werner War Party 2417 #+  
 B A Lady 6807 305 +  
 Apex Windy 078 #  
 R F Blanche 465 #

BW	WW	Milk	YW	%IMF	REA	Fat	\$B
+5.2	+82	+27	+155	N/A	N/A	N/A	N/A
CED	BW	205 ADJ	NR	DAM NR	365 ADJ	YR	\$W
-5	94	738	103	1-103	1535	112	+50.60

- NHC, Suitable for Heifers posted Highest \$B

## Lot 15 Ridl Appearance 89

Calved: 1/11/2018 19142023 Tattoo: 89 Bull

Young Dale Xcaliber 32X  
**Freys Appearance 18109016** F A R Missie 62Y  
 WMR Hero 321  
**Ridl Blackbird 4100 17805570** RF Blackbird 019  
 Young Dale Knock Out 134U  
 Brookmore Tibbie 222T  
 S A V Bismarck 5682 #+ [RDF]  
 F A R Missie 48W #  
 SRA 2418 of RR 303  
 WMR Pride 722  
 Connealy Thunder # [RDF]  
 R F Blackbird 743

BW	WW	Milk	YW	%IMF	REA	Fat	\$B
+3.8	+68	+25	+115	+20	+5.6	+0.02	+130.76
CED	BW	205 ADJ	NR	DAM NR	365 ADJ	YR	\$W
-4	94	735	103	3-104	1394	102	+60.07

- Actual weaning weight of 820

## Lot 19 Ridl Weigh up 882

Calved: 2/7/2018 19210581 Tattoo: 882 Bull

Sitz Upward 307R #  
**Plattemere Weigh Up K360 [RDF] 16692552** Barbara of Plattemere 337 #  
 Tokach New Design 5412  
**Tokach Black Lady 1460 17079242** Tokach Black Lady 2717  
 Connealy Onward #  
 Sitz Henrietta Pride 81M  
 G A R Retail Product #  
 Barbara of Plattemere 311  
 Bon View New Design 878 #  
 Tokach Blackbird 3226  
 Tokach HI Road 0870  
 Tokach Black Lady 0740

BW	WW	Milk	YW	%IMF	REA	Fat	\$B
+3.5	+72	+29	+126	+72	+4.6	-.013	+174.93
CED	BW	205 ADJ	NR	DAM NR	365 ADJ	YR	\$W
+6	101	732	102	6-99	1446	105	+68.87



## Lot 20 **Ridl Epic 824**

Calved: 1/18/2018 19146933 Tattoo: 824 Bull

Varilek Product 2010 04  
**3F Epic 4631**  
**17950219** Zebo Queen 1072

Connealy Final Product #  
 Varilek Pearl 0006 014  
 EF Complement 8088 #  
 EXG Blackcap 6247 PPC [RDF]  
 Werner War Party 2417 #+  
 B A Lady 6807 305 +  
 WMR Timeless 580  
 RF Blanche 065

R B Tour Of Duty 177 + [RDF]  
**Ridl Blanche 621**  
**18654642** Ridl Blanche 362

BW	WW	Milk	YW	%IMF	REA	Fat	\$B
+1.8	+69	+33	+134	+84	+69	+006	+189.21
CED	BW	205 ADJ	NR	DAM NR	365 ADJ	YR	\$W
+8	78	762	106	1-106	1477	108	+67.80

- NHF, Suitable for heifers

## Lot 23 **Ridl Colonel 8105**

Calved: 2/13/2018 19146987 Tattoo: 8105 Bull

baldridge Xpand x743 +  
**Baldridge Colonel C251 +**  
**18493773** Baldridge Isabel Y69

Hoover Dam #  
 Baldridge Queen S87  
 Styles Upgrade J59 #  
 Baldridge Isabel T935 +  
 A A R Really Windy 1205 #  
 H A R B Black Lady 073 J H #  
 B C C Trailblazer 804  
 R F Blanche 955

H A R B Windy 702 JH #  
**R F Blanche 811**  
**16229271** R F Blanche 372

BW	WW	Milk	YW	%IMF	REA	Fat	\$B
-.4	+53	+23	+96	+61	+52	+004	+96.58
CED	BW	205 ADJ	NR	DAM NR	365 ADJ	YR	\$W
+10	76	699	97	7-95	1384	101	+53.82

- Suitable for heifers

## Lot 24 **Ridl Epic 8217** [DDP]

Calved: 2/22/2018 19347323 Tattoo: 8217 Bull

Varilek Product 2010 04 [DDF]  
**3F Epic 4631 [DDF]**  
**17950219** Zebo Queen 1072

Connealy Final Product # [DDF]  
 Varilek Pearl 0006 014  
 EF Complement 8088 # [DDF]  
 EXG Blackcap 6247 PPC [RDF-DDF]  
 Boyd New Day 8005 #+ [DDF]  
 B/R Ruby 1224 [DDC]  
 HARB Pendleton 765 J H # [DDF]  
 Isaak Erica Lassie 677

B/R New Day 454 # [DDC]  
**Isaak Erica Lassie 426**  
**18159914** Isaak Erica Lassie 919

BW	WW	Milk	YW	%IMF	REA	Fat	\$B
+1.3	+72	+27	+128	N/A	N/A	N/A	N/A
CED	BW	205 ADJ	NR	DAM NR	365 ADJ	YR	\$W
+8	90	807	109	3-103	1429	106	+62.11

- NHF, 810 actual weaning weight



**Baldridge Nebraska 901 - Sire of Lot 21**

## Lot 21 **Ridl Nebraska 853**

Calved: 2/2/2018 19145902 Tattoo: 853 Bull

S A F Focus of E R #  
**Baldridge Nebraska 901 #**  
**13412671** Baldridge Flossie 367

S A F Fame #  
 G D A R Forever Lady 246  
 Bon View Emulation Ext 473 #  
 Baldridge Flossie 65  
 Hero 6267 of R R 2418 #  
 H A Rito Blackcap 9038  
 Bon View New Design 878 #  
 R F Lady 537

H A Image Maker 0415 #+  
**RF Lady 911**  
**16482282** R F Lady 709

BW	WW	Milk	YW	%IMF	REA	Fat	\$B
+2.3	+61	+25	+102	+29	+32	-.030	+121.43
CED	BW	205 ADJ	NR	DAM NR	365 ADJ	YR	\$W
+6	79	706	100	7-102	1392	100	+60.92

- Suitable for heifers

## Lot 25 **Ridl Natural 876**

Calved: 2/6/2018 19148141 Tattoo: 876 Bull

S A V Resource 1441 #+  
**Mytty Natural**  
**17935475** Mytty Primrose Lady 1025

Rito 707 of Ideal 3407 7075 +  
 S A V Blackcap May 4136  
 Mytty Thunderstruck #  
 Mytty Primrose Lady U267  
 Connealy Onward #  
 Sitz Beebe Queen 259R  
 L A Traveler 479  
 L A Blackcap 814

HCC Onward 7773  
**RF Blackcap 067 #**  
**16728425** R F Blackcap 702

BW	WW	Milk	YW	%IMF	REA	Fat	\$B
+2.0	+57	+34	+110	+40	+97	+021	+145.59
CED	BW	205 ADJ	NR	DAM NR	365 ADJ	YR	\$W
+8	92	696	97	7-102	1354	99	+58.44

## Lot 22 **Ridl Identity 8210**

Calved: 3/13/2018 19292148 Tattoo: 8210 Bull

Koupals B&B Identity #  
**Isaak Identity 6013**  
**18738123** Isaak Merle 900

Sitz Upward 307R #  
 B&B Erica 605 #  
 HARB Pendleton 765 J H #  
 Isaak Merle 508  
 MOGCK Sure Shot #  
 Mogck Mary 1255  
 Hyline Right Time 338 #  
 Isaak Blackbird 522

Mogck Bullseye #  
**Isaak Right Time 404**  
**18157795** Isaak Right Time 338 006

BW	WW	Milk	YW	%IMF	REA	Fat	\$B
+3.4	+77	+33	+134	+61	+58	+032	+174.72
CED	BW	205 ADJ	NR	DAM NR	365 ADJ	YR	\$W
-2	94	901	122	3-109	1519	113	+79.69

- 846 actual weaning weight



**Mogck Bullseye - Maternal Grand sire of Lot 22**



Lot  
**26**

# Ridl Weigh Up 863

Calved: 2/4/2018 19210579 Tattoo: 863 Bull

Sitz Upward 307R #  
**Plattermere Weigh Up K360 [RDF]**  
16692552 Barbara of Plattermere 337 #

Connealy Onward #  
Sitz Henrietta Pride 81M  
G A R Retail Product #  
Barbara of Plattermere 311  
WMR Timeless 458 #  
AB Fanny 0222 #  
Connealy Thunder # [RDF]  
R F Princess Sue 503

WMR Timeless 580  
**Ridl Princess Sue 201**  
17248214 RF Princess Sue 030

BW	WW	Milk	YW	%IMF	REA	Fat	\$B
-5	+71	+25	+115	+65	+59	-.003	+144.16
CED	BW	205 ADJ	NR	DAM NR	365 ADJ	YR	\$W
+12	77	750	105	5-103	1304	95	+75.24

- Suitable for heifers, actual weaning weight of 810



Connealy Spur - Sire of Lot 30

Lot  
**27**

# Ridl Appearance 871

Calved: 2/5/2018 19142030 Tattoo: 871 Bull

Young Dale Xcaliber 32X  
**Freys Appearance**  
18109016 F A R Missie 62Y

Young Dale Knock Out 134U  
Brookmore Tibbie 222T  
S A V Bismarck 5682 #+ [RDF]  
F A R Missie 48W #  
H C Sitz Traveler 602 #  
L A Queen Lass 206 #  
Hyline WMR Super X 502  
L A Blackcap 501

L A Traveler 479  
**R F Blackcap 702**  
15878819 L A Blackcap 814

BW	WW	Milk	YW	%IMF	REA	Fat	\$B
+3.0	+53	+28	+96	+19	+33	+0.21	+102.09
CED	BW	205 ADJ	NR	DAM NR	365 ADJ	YR	\$W
+0	94	753	100	10-103	1383	100	+52.72

- Actual weaning weight of 786

Lot  
**28**

# Ridl Roughrider 831

Calved: 1/21/2018 19142046 Tattoo: 831 Bull

S A V Privilege 3030  
**Vermilion Roughrider**  
18508617 Vermilion Blackette 3139 #

S A V Priority 7283 #  
S A V Blackcap May 1442 +  
Connealy Dublin 8223 #  
Vermilion Blackette 0138  
SRA 2418 of RR 303  
WMR Pride 722  
DCC Franklin 916  
RF Erica 924

WMR Hero 321  
**Ridl Erica 497**  
17805593 RF Erica 167

BW	WW	Milk	YW	%IMF	REA	Fat	\$B
-1.2	+46	+21	+95	+28	+42	+0.004	+128.11
CED	BW	205 ADJ	NR	DAM NR	365 ADJ	YR	\$W
+12	74	642	90	3-99	1330	97	+37.47

- Suitable for heifers

Lot  
**29**

# Ridl Epic 8205

Calved: 3/6/2018 19347322 Tattoo: 8205 Bull

Varilek Product 2010 04  
**3F Epic 4631**  
17950219 Zebo Queen 1072

Connealy Final Product #  
Varilek Pearl 0006 014  
EF Complement 8088 #  
EXG Blackcap 6247 PPC [RDF]  
Bon View New Design 208 #  
TC Erica Eileen 2047 +  
S A V Net Worth 4200 #  
Isaak Blackbird 547 #

TC Total 410 #  
**Isaak Blackbird 418**  
18159921 Isaak Blackbird 007 #

BW	WW	Milk	YW	%IMF	REA	Fat	\$B
+2.5	+74	+26	+133	N/A	N/A	N/A	N/A
CED	BW	205 ADJ	NR	DAM NR	365 ADJ	YR	\$W
+4	90	777	105	3-108	1318	98	+58.12

- NHF

Lot  
**30**

# Ridl Spur 8118

Calved: 2/27/2018 19143019 Tattoo: 8118 Bull

Connealy Stimulus 8419 #  
**Connealy Spur**  
17304082 Jazza of Conanga 8594 #

H A Power Alliance 1025 #+  
Black Creesa of Conanga 5332  
TC Grid Topper 355 #+  
Jemma of Conanga 5614  
Rito 112 of 2536 Rito 616 #+  
H A R B Juanada Erica 280 JH +  
Bon View New Design 878 #  
Vermilion Barb 0339

HARB Cowcutta 776 J H  
**Vermilion Barb 0356 #**  
16643926 Vermilion Barb 2059

BW	WW	Milk	YW	%IMF	REA	Fat	\$B
+5.0	+70	+34	+121	+55	+21	+0.15	+151.22
CED	BW	205 ADJ	NR	DAM NR	365 ADJ	YR	\$W
+0	98	748	104	6-106	1406	102	+66.14

- Suitable for heifers

Lot  
**31**

# Ridl Cash 8119 [DDP]

Calved: 3/2/2018 19142061 Tattoo: 8119 Bull

Barstow Cash # [DDF]  
**JAR Cash 993 420 +**  
18022477 JAR Miss Countess 6155 993

Sitz Dash 10277 # [DDF]  
Barstow Queen W16 [DDF]  
DDR First Edition 6027  
JAR Miss Countess 364 6155 #  
S A V Final Answer 0035 # [RDF-DDF]  
Happy Dell of Conanga 262  
HCC Bull Durham 7769  
R F Pamela 724

Connealy Right Answer 746 # [DDF]  
**Ridl Pamela 331**  
17536266 RF Pamela 078 # [DDF]

BW	WW	Milk	YW	%IMF	REA	Fat	\$B
+2.0	+71	+23	+119	+23	+29	+0.034	+119.05
CED	BW	205 ADJ	NR	DAM NR	365 ADJ	YR	\$W
+8	85	753	105	2-98	1291	103	+67.97

- Suitable for heifers

Lot  
**32**

# Ridl The Rock 802

Calved: 1/12/2018 19345153 Tattoo: 802 Bull

K C F Bennett Southside  
**K C F Bennett TheRock A473**  
17849954 K C F Miss Protege W148 +

Nichols Extra K205 #  
K C F Miss 208 S11 #  
GAR-EGL Protege #+  
Breea of Conanga 3991  
SydGen 928 Destination 5420 #+  
Flying V Miss Price 426  
Connealy Right Answer 746 #  
RF Erica 083

Prairie Pride Next Step 2036  
**Ridl Erica 613**  
18537110 Ridl Erica 336 #

BW	WW	Milk	YW	%IMF	REA	Fat	\$B
+1.7	+79	+17	+125	+82	+62	-.030	+156.64
CED	BW	205 ADJ	NR	DAM NR	365 ADJ	YR	\$W
+8	68	698	100	1-100	1311	100	+80.09

- Suitable for heifers





**Connealy Impression** - Maternal Grand sire of Lot 33

**Lot 33** **Ridl Natural 864**

Calved: 2/5/2018 19148115 Tattoo: 864 Bull

S A V Resource 1441 #+ Rito 707 of Ideal 3407 7075 +  
**Mytty Natural** S A V Blackcap May 4136  
**17935475** Mytty Primrose Lady 1025 Mytty Thunderstruck +  
 Mytty Primrose Lady U267  
 Connealy Impression # Connealy Reflection #  
**Ridl Fortune 238** Pearl Pammy of Conanga 194  
**17293430** R F Fortune 577 Allegany Production 153  
 R F Fortune 251

BW	WW	Milk	YW	%IMF	REA	Fat	\$B
-.5	+56	+28	+103	+.34	+.83	+.005	+143.47
CED	BW	205 ADJ	NR	DAM NR	365 ADJ	YR	\$W
+10	80	664	93	5-98	1339	98	+64.26

• Suitable for heifers

**Lot 34** **Ridl Weigh Up 899**

Calved: 2/10/2018 19210582 Tattoo: 899 Bull

Sitz Upward 307R # Connealy Onward #  
**Plattermere Weigh Up K360 [RDF]** Sitz Henrietta Pride 81M  
**16692552** Barbara of Plattermere 337 # G A R Retail Product #  
 Barbara of Plattermere 311  
 Tokach Total 8087 TC Total 410 #  
**Tokach Erica Eileen 1397** Tokach Erica Eileen 3123 #  
**17079222** Tokach Erica Eileen 3169 Hyline Right Time 338 #  
 Tokach Erica Eileen 0529

BW	WW	Milk	YW	%IMF	REA	Fat	\$B
+3.9	+79	+23	+136	+.57	+.47	-.020	+162.73
CED	BW	205 ADJ	NR	DAM NR	365 ADJ	YR	\$W
-2	98	706	98	6-96	1333	97	+63.72

**Lot 35** **Ridl Identity 8204 [DDP]**

Calved: 3/15/2018 19292167 Tattoo: 8204 Bull

Koupals B&B Identity # [DDF] Sitz Upward 307R # [DDF-M1F]  
**Isaak Identity 6013** B&B Erica 605 # [DDF]  
**18738123** Isaak Merle 900 HARB Pendleton 765 J H # [DDF-M1F]  
 Isaak Merle 508  
 Isaak New Frontier 2090 EVENSON New Frontier 5107  
**Isaak Miss Burgess 440** Isaak Erica 774  
**18157803** Isaak Miss Burgess 954 MC Cumber 004 Traveler 7105  
 Isaak Miss Burgess 254

BW	WW	Milk	YW	%IMF	REA	Fat	\$B
+.4	+55	+29	+97	+.30	+.11	+.051	+130.27
CED	BW	205 ADJ	NR	DAM NR	365 ADJ	YR	\$W
+9	82	718	97	3-100	1336	99	+62.62

• Suitable for heifers

**Lot 36** **Ridl Roughrider 8112**

Calved: 2/21/2018 19142045 Tattoo: 8112 Bull

S A V Privilege 3030 S A V Priority 7283 #  
**Vermilion Roughrider** S A V Blackcap May 1442 +  
**18508617** Vermilion Blackette 3139 # Connealy Dublin 8223 #  
 Vermilion Blackette 0138  
 DL Consensus 462 Connealy Consensus 7229 #  
**Ridl Toni 24 561** DL Lady Ida 1018 #  
**18115400** Tokach Lady Eileenmere 2083 Hoover Dam #  
 Tokach Lady Eileenmere 9075 #

BW	WW	Milk	YW	%IMF	REA	Fat	\$B
+3.6	+70	+25	+121	+.36	+.42	+.001	+169.04
CED	BW	205 ADJ	NR	DAM NR	365 ADJ	YR	\$W
+7	88	768	107	2-98	1357	99	+59.48

**Lot 37** **Commercial Bull**

Calved: 3/07/2018 Bull

Werner War Party 2417 #+ Connealy Onward #  
**R B Tour Of Duty 177 +** BAAR USA Lady Jaye 489 +  
**16984170** B A Lady 6807 305 + Vermilion Dateline 7078 #  
 G D Lady Hi Flyer 302 +

Purebred Angus Cow

BW	Actual WW	Actual YW
90	710	1220

**Lot 38** **Ridl Appearance 810**

Calved: 1/13/2018 19142025 Tattoo: 810 Bull

Young Dale Xcaliber 32X Young Dale Knock Out 134U  
**Freys Appearance** Brookmore Tibbie 222T  
**18109016** F A R Missie 62Y S A V Bismarck 5682 #+ [RDF]  
 F A R Missie 48W #  
 A A R Ten X 7008 S A # Mytty In Focus # [RDF]  
**Ridl Pamela 306 #** A A R Lady Kelton 5551 #  
**17536239** RF Pamela 140 Sitz Upward 307R #  
 R F Pamela 613

BW	WW	Milk	YW	%IMF	REA	Fat	\$B
+2.2	+80	+29	+140	+.56	+1.09	-.024	+187.48
CED	BW	205 ADJ	NR	DAM NR	365 ADJ	YR	\$W
+8	74	702	98	3-109	1313	96	+77.87

• Twin to Lot 2, Suitable for heifers posted 2nd highest \$B



**AAR Ten X 7008 SA** - Maternal Grand sire of Lot 38





**DL Consensus 462 - Maternal Grand sire of Lot 39**

**Lot 39 Ridl Appearance 822**

Calved: 1/17/2018 19142033 Tattoo: 822 Bull

Young Dale Xcaliber 32X  
**Freys Appearance**  
**18109016** F A R Missie 62Y  
 DL Consensus 462  
**Ridl Lady 560**  
**18115403** R F Lady 708

Young Dale Knock Out 134U  
 Brookmore Tibbie 222T  
 S A V Bismarck 5682 #+ [RDF]  
 F A R Missie 48W #  
 Connealy Consensus 7229 #  
 DL Lady Ida 1018 #  
 K G Power Design #  
 R F Lady 360

BW	WW	Milk	YW	%IMF	REA	Fat	\$B
+1.5	+52	+17	+91	+23	+49	+006	+130.71
CED	BW	205 ADJ	NR	DAM NR	365 ADJ	YR	\$W
+3	89	695	97	2-96	1257	92	+40.07

**Lot 40 Ridl Appearance 873**

Calved: 2/5/2018 19142034 Tattoo: 873 Bull

Young Dale Xcaliber 32X  
**Freys Appearance**  
**18109016** F A R Missie 62Y  
 Basin Excitement #  
**Ridl Black Lady 328 #**  
**17536288** R F Black Lady 955 #

Young Dale Knock Out 134U  
 Brookmore Tibbie 222T  
 S A V Bismarck 5682 #+ [RDF]  
 F A R Missie 48W #  
 Basin Expedition R156 +  
 Basin Lady S532 AK  
 HCC Bull Durham 7769  
 R F Black Lady 439

BW	WW	Milk	YW	%IMF	REA	Fat	\$B
+3.0	+53	+27	+97	+18	+55	-.003	+117.23
CED	BW	205 ADJ	NR	DAM NR	365 ADJ	YR	\$W
+2	88	668	93	4-105	1246	91	+48.17

**Lot 41 Ridl Natural 870**

Calved: 2/5/2018 19148117 Tattoo: 870 Bull

S A V Resource 1441 #+  
**Mytty Natural**  
**17935475** Mytty Primrose Lady 1025  
 Connealy Right Answer 746 #  
**Ridl Debby 239**  
**17292519** R F Debby 740

Rito 707 of Ideal 3407 7075 +  
 S A V Blackcap May 4136  
 Mytty Thunderstruck +  
 Mytty Primrose Lady U267  
 S A V Final Answer 0035 # [RDF]  
 Happy Dell of Conanga 262  
 Baldrige Nebraska 901 #  
 R F Debby 202 #

BW	WW	Milk	YW	%IMF	REA	Fat	\$B
-.4	+54	+33	+110	-.10	+1.16	+002	+138.50
CED	BW	205 ADJ	NR	DAM NR	365 ADJ	YR	\$W
+15	70	608	85	5-91	1290	94	+61.46

• Suitable for heifers, highest REA EPD

**Lot 42 Ridl Roughrider 8110**

Calved: 2/17/2018 19142040 Tattoo: 8110 Bull

S A V Privilege 3030  
**Vermilion Roughrider**  
**18508617** Vermilion Blackette 3139 #  
 PA Fortitude 2500  
**Ridl Black Lady 520**  
**18120979** R F Black Lady 139

S A V Priority 7283 #  
 S A V Blackcap May 1442 +  
 Connealy Dublin 8223 #  
 Vermilion Blackette 0138  
 GAR-EGL Protege #+  
 G G Clara 0171  
 Sitz Upward 307R #  
 R F Black Lady 746

BW	WW	Milk	YW	%IMF	REA	Fat	\$B
-1.0	+64	+25	+107	+45	+52	+004	+164.58
CED	BW	205 ADJ	NR	DAM NR	365 ADJ	YR	\$W
+10	65	706	98	2-96	1316	96	+64.19

• Suitable for heifers



**Connealy Right Answer 746 - Maternal Grand sire of Lots 41 & 43**

**Lot 43 Ridl Cash 8114 [DDP]**

Calved: 2/24/2018 19142059 Tattoo: 8114 Bull

Barstow Cash # [DDF]  
**JAR Cash 993 420 +**  
**18022477** JAR Miss Countess 6155 993  
 Connealy Right Answer 746 # [DDF]  
**Ridl Pamela 231**  
**17292523** R F Pamela 613

Sitz Dash 10277 # [DDF]  
 Barstow Queen W16 [DDF]  
 DDR First Edition 6027  
 JAR Miss Countess 364 6155 #  
 S A V Final Answer 0035 # [RDF-DDF]  
 Happy Dell of Conanga 262  
 Bon View New Design 878 # [DDF]  
 R F Pamela 437

BW	WW	Milk	YW	%IMF	REA	Fat	\$B
-1.0	+56	+35	+97	+11	+39	+051	+98.43
CED	BW	205 ADJ	NR	DAM NR	365 ADJ	YR	\$W
+18	74	659	92	5-101	1297	95	+73.89

• Suitable for heifers posted highest CED Epd

**Lot 44 Ridl Roughrider 836**

Calved: 1/25/2018 19142043 Tattoo: 836 Bull

S A V Privilege 3030  
**Vermilion Roughrider**  
**18508617** Vermilion Blackette 3139 #  
 74-51 Changing Time 060 +  
**TNT JK Ms Ecstasy 422**  
**17935458** TNT JK Ecstasy 905 #

S A V Priority 7283 #  
 S A V Blackcap May 1442 +  
 Connealy Dublin 8223 #  
 Vermilion Blackette 0138  
 Exar Lutton 1831 #  
 Grandview Womack Miss 7172 +  
 Connealy Impression #  
 T N T Ms Ecstasy 204

BW	WW	Milk	YW	%IMF	REA	Fat	\$B
+4	+56	+14	+97	+24	+56	+009	+124.72
CED	BW	205 ADJ	NR	DAM NR	365 ADJ	YR	\$W
+11	76	623	87	3-92	1258	92	+43.25

• Suitable for heifers



# Lot 45 Ridl Market Rally 681

Calved: 2/4/2018 19142051 Tattoo: 861 Bull

Connealy Capitalist 028 # [RDF]  
**Prairie Pride Market Rally**  
**18397204** Prairie Pride Elbena 3065

S A V Final Answer 0035 # [RDF]  
 Prides Pita of Conanga 8821  
 MOGCK Sure Shot #  
 Prairie Pride Elbena 0010  
 G A R Grid Maker #+  
 S A V Abigale 0451  
 G A R Retail Product #  
 Blacklady 1211 Bam

S A V Bismarck 5682 #+ [RDF]  
**Ridl Black Lady 678**  
**18654525** Black Lady 6379 Bam

BW	WW	Milk	YW	%IMF	REA	Fat	\$B
+7	+49	+21	+81	+20	+26	+045	+95.05
CED	BW	205 ADJ	NR	DAM NR	365 ADJ	YR	\$W
+13	82	692	97	1-97	1314	96	+49.35

- Suitable for heifers

# Lot 46 Ridl Appearance 814

Calved: 1/15/2018 19142027 Tattoo: 814 Bull

Young Dale Xcaliber 32X  
**Freys Appearance**  
**18109016** F A R Missie 62Y

Young Dale Knock Out 134U  
 Brookmore Tibbie 222T  
 S A V Bismarck 5682 #+ [RDF]  
 F A R Missie 48W #  
 GAR-EGL Protege #+  
 G G Clara 0171  
 HCC Onward 7773  
 R F Debby 357

PA Fortitude 2500  
**Ridl Debby 553**  
**18120975** Ridl Debby 272

BW	WW	Milk	YW	%IMF	REA	Fat	\$B
+1.0	+58	+12	+85	+33	+34	+017	+124.77
CED	BW	205 ADJ	NR	DAM NR	365 ADJ	YR	\$W
+5	78	709	99	2-99	1215	89	+46.31

- Suitable for heifers

# Lot 47 Ridl Market Rally 8104

Calved: 2/11/2018 19142049 Tattoo: 8104 Bull

Connealy Capitalist 028 # [RDF]  
**Prairie Pride Market Rally**  
**18397204** Prairie Pride Elbena 3065

S A V Final Answer 0035 # [RDF]  
 Prides Pita of Conanga 8821  
 MOGCK Sure Shot #  
 Prairie Pride Elbena 0010  
 Werner War Party 2417 #+  
 B A Lady 6807 305 +  
 WMR Timeless 580  
 RF Princess Sue 030

R B Tour Of Duty 177 + [RDF]  
**Ridl Princess Sue 667**  
**18654664** Ridl Princess Sue 201

BW	WW	Milk	YW	%IMF	REA	Fat	\$B
+3.2	+60	+30	+101	+46	+70	+004	+141.25
CED	BW	205 ADJ	NR	DAM NR	365 ADJ	YR	\$W
-1	82	704	98	1-98	1312	96	+58.49



**RB Tour of Duty 177 - Maternal Grand sire of Lot 37**

# Lot 48 Ridl Appearance 859

Calved: 2/4/2018 19142032 Tattoo: 859 Bull

Young Dale Xcaliber 32X  
**Freys Appearance**  
**18109016** F A R Missie 62Y

Young Dale Knock Out 134U  
 Brookmore Tibbie 222T  
 S A V Bismarck 5682 #+ [RDF]  
 F A R Missie 48W #  
 Basin Expedition R156 +  
 Basin Lady S532 AK  
 H A R B Windy 702 JH #  
 R F Blanche 372

Basin Excitement #  
**Ridl Blanche 321**  
**17536289** R F Blanche 811

BW	WW	Milk	YW	%IMF	REA	Fat	\$B
+1.1	+64	+30	+106	+28	+61	+020	+114.96
CED	BW	205 ADJ	NR	DAM NR	365 ADJ	YR	\$W
+7	84	646	90	4-100	1212	88	+70.52

- Suitable for heifers



**HA Cowboy Up 5405 - Sire of Lot 49**

# Lot 49 Tri-K Cowboy Kahn F05

Calved: 1/7/2018 19183880 Tattoo: F05 Bull

HA Outside 3008  
**HA Cowboy Up 5405**  
**18286467** HA Blackcap Lady 1602 #

KG Solution 0018  
 HA Ever Lady 1575 #  
 Sitz Upward 307R #  
 HA Blackcap Lady 5515  
 Connealy Onward #  
 Sitz Henrietta Pride 81M  
 TC Total 410 #  
 G A R 1407 New Design 1552 +

Sitz Upward 307R #  
**Tri-K Karisma Klair A54**  
**17738961** 2 K's Total Karisma W003 +

BW	WW	Milk	YW	%IMF	REA	Fat	\$B
+1.7	+66	+25	+113	+38	+45	+008	+126.47
CED	BW	205 ADJ	NR	DAM NR	365 ADJ	YR	\$W
+5	67	571	100	1-100	1166	100	+69.30

- Suitable for heifers, I bought this calf as a cow calf pair this past summer

# Lot 50 Ridl The Rock 808

Calved: 1/12/2018 19146919 Tattoo: 808 Bull

K C F Bennett Southside  
**K C F Bennett TheRock A473**  
**17849954** K C F Miss Protege W148 +

Nichols Extra K205 #  
 K C F Miss 208 S11 #  
 GAR-EGL Protege #+  
 Breela of Conanga 3991  
 Musgrave Aviator  
 PF Queen Mother 135  
 Connealy Impression #  
 R F Fortune 577

PF Aviator 424  
**Ridl Fortune 686**  
**18785100** Ridl Fortune 238

BW	WW	Milk	YW	%IMF	REA	Fat	\$B
+2	+49	+20	+94	+47	+53	+010	+123.59
CED	BW	205 ADJ	NR	DAM NR	365 ADJ	YR	\$W
+8	83	644	90	1-90	1257	92	+41.53

- Suitable for heifers



# Lot 51 Ridl Cash 8115 [DDP]

Calved: 2/25/2018 19142060 Tattoo: 8115 Bull

Barstow Cash # [DDF]  
**JAR Cash 993 420 +**  
**18022477** JAR Miss Countess 6155 993

Sitz Dash 10277 # [DDF]  
 Barstow Queen W16 [DDF]  
 DDR First Edition 6027  
 JAR Miss Countess 364 6155 #  
 SRA 2418 of RR 303  
 WMR Pride 722  
 Mc Bee WMR Super X 745 #  
 R F Pamela 146 #

WMR Hero 321  
**Ridl Pamela 5104**  
**18115395** R F Pamela 437

BW	WW	Milk	YW	%IMF	REA	Fat	\$B
+3.2	+60	+21	+99	+1.0	+5.9	+0.01	+102.11
CED	BW	205 ADJ	NR	DAM NR	365 ADJ	YR	\$W
+0	90	665	93	2-94	1302	95	+55.43



**Musgrave Invision - Sire of Lot 54**

# Lot 52 Ridl Identity 8207 [OHP]

Calved: 3/16/2018 19292166 Tattoo: 8207 Bull

Koupals B&B Identity #  
**Isaak Identity 6013**  
**18738123** Isaak Merle 900

Sitz Upward 307R #  
 B&B Erica 605 # [OHF]  
 HARB Pendleton 765 J H # [OHF]  
 Isaak Merle 508  
 OPP Franklin 837  
 Isaak Miss Lacey 539  
 Isaak New Day 344  
 Isaak Bando 5175 145 #

Isaak Franklin 2086  
**Isaak Black Lady 455**  
**18157799** Isaak Black Lady 517

BW	WW	Milk	YW	%IMF	REA	Fat	\$B
+0	+52	+23	+93	+85	+46	+0.28	+145.70
CED	BW	205 ADJ	NR	DAM NR	365 ADJ	YR	\$W
+12	70	745	101	3-102	1324	99	+58.60

- Suitable for heifers

# Lot 53 Ridl Identity 8215 [DDP]

Calved: 3/21/2018 19292153 Tattoo: 8215 Bull

Koupals B&B Identity # [DDF]  
**Isaak Identity 6013**  
**18738123** Isaak Merle 900

Sitz Upward 307R # [DDF]  
 B&B Erica 605 # [DDF]  
 HARB Pendleton 765 J H # [DDF]  
 Isaak Merle 508  
 Boyd New Day 8005 #+ [DDF]  
 B/R Ruby 1224 [DDC]  
 Hyline Right Time 338 # [DDF]  
 Isaak Annie 201

B/R New Day 454 # [DDC]  
**Isaak Annie 427**  
**18157794** Isaak Annie 811

BW	WW	Milk	YW	%IMF	REA	Fat	\$B
-.4	+50	+26	+85	N/A	N/A	N/A	N/A
CED	BW	205 ADJ	NR	DAM NR	365 ADJ	YR	\$W
+10	74	725	98	3-97	1336	99	+50.12

- Suitable for heifers

# Lot 54 JD 152 Invision F840

Calved: 2/13/2018 19113839 Tattoo: 840 Bull

MCATL Pure Product 903-55 #  
**Musgrave Invision**  
**17257723** MCATL Evergreen 619-K27T

Connealy Final Product #  
 M A Esta 55-252  
 Mytty In Focus # [RDF]  
 ALC Evergreen K27T  
 Kesslers Frontman R001 #  
 MOGCK Entello 1446 #  
 Hilltops New Day E24  
 Baxter Grid 6945

MOGCK Frontman 1141  
**D 1141 Sarah C5105**  
**18282480** BA New Day 2694

BW	WW	Milk	YW	%IMF	REA	Fat	\$B
+6	+56	+27	+98	+4.49	+3.38	+0.36	+129.50
CED	BW	205 ADJ	NR	DAM NR	365 ADJ	YR	\$W
+6	90			1-109	1186	100	+55.02

- Bought as a cow calf pair this past summer

# Lot 55 Ridl Roughrider 8132

Calved: 3/28/2018 19142041 Tattoo: 8132 Bull

S A V Privilege 3030  
**Vermilion Roughrider**  
**18508617** Vermilion Blackette 3139 #

S A V Priority 7283 #  
 S A V Blackcap May 1442 +  
 Connealy Dublin 8223 #  
 Vermilion Blackette 0138  
 MOGCK Whispering Wind 584 #  
 MOGCK Rosebud 2576 #  
 WMR Timeless 580  
 RF Erica 053

MOGCK Whispering Wind 48  
**Ridl Erica 543**  
**18120853** Ridl Erica 229 #

BW	WW	Milk	YW	%IMF	REA	Fat	\$B
+1.7	+79	+28	+139	+1.16	+0.76	+0.26	+170.92
CED	BW	205 ADJ	NR	DAM NR	365 ADJ	YR	\$W
+4	85	744	104	2-105	1334	97	+79.78

- Suitable for heifers, a very good younger calf by Roughrider with a super EPD Profile, don't overlook this good young calf

# Lot 56 Ridl Market Rally 8124

Calved: 3/7/2018 19142052 Tattoo: 8124 Bull

Connealy Capitalist 028 # [RDF]  
**Prairie Pride Market Rally**  
**18397204** Prairie Pride Elbena 3065

S A V Final Answer 0035 # [RDF]  
 Prides Pita of Conanga 8821  
 MOGCK Sure Shot #  
 Prairie Pride Elbena 0010  
 G A R Grid Maker #+  
 S A V Abigale 0451  
 L A Traveler 479  
 L A Blackcap 814

S A V Bismarck 5682 #+ [RDF]  
**Ridl Blackcap 631**  
**18526786** R F Blackcap 702

BW	WW	Milk	YW	%IMF	REA	Fat	\$B
+1.9	+55	+25	+91	+0.04	+0.50	+0.68	+97.27
CED	BW	205 ADJ	NR	DAM NR	365 ADJ	YR	\$W
+5	85	694	97	1-97	1275	102	+54.52

- Suitable for heifers



**SAV Bismarck 5682 - Maternal Grand sire of Lot 56**



Lot  
60

# Ridl Market Rally 844

Calved: 1/29/2018 19142050 Tattoo: 844 Bull

Connealy Capitalist 028 # [RDF] S A V Final Answer 0035 # [RDF]  
**Prairie Pride Market Rally** Prides Pita of Conanga 8821  
**18397204** Prairie Pride Elbena 3065 MOGCK Sure Shot #  
 PA Fortitude 2500 Prairie Pride Elbena 0010  
 GAR-EGL Protege #+  
**Ridl Lady 655** G G Clara 0171  
**18526957** RF Lady 911 H A Image Maker 0415 #+  
 R F Lady 709

BW	WW	Milk	YW	%IMF	REA	Fat	\$B
+7	+50	+17	+87	+34	+65	+0.01	+124.57
CED	BW	205 ADJ	NR	DAM NR	365 ADJ	YR	\$W
+7	65	652	91	1-91	1263	92	+41.23

• Suitable for heifers



**Ellingson Chaps 4095 - Sire of Lot 57**

Lot  
57

# Ridl Chaps 8216 [DDP]

Calved: 3/2/2018 19296238 Tattoo: 8216 Bull

S A V Resource 1441 #+ [DDF] Rito 707 of Ideal 3407 7075 +  
**Ellingson Chaps 4095 [DDF]** S A V Blackcap May 4136  
**17932714** E A Blackcap 0360 # M A S Wide Butt 6032 [DDF]  
 B/R New Day 454 # [DDC] E A Blackcap 718 #  
**Isaak Lady Blue 435** Boyd New Day 8005 #+ [DDF]  
**18159917** Isaak Lady Blue 827 B/R Ruby 1224 [DDC]  
 Vermillion Yellowstone # [DDF]  
 Farview Lady Blue 8130

BW	WW	Milk	YW	%IMF	REA	Fat	\$B
+2.3	+55	+23	+92	+23	+65	+0.11	+76.75
CED	BW	205 ADJ	NR	DAM NR	365 ADJ	YR	\$W
+3	88	700	95	3-102	1196	89	+51.76



**Connealy Final Product - Maternal Grand sire of Lot 61**

Lot  
58

# Ridl Natural 854

Calved: 2/2/2018 19148143 Tattoo: 854 Bull

S A V Resource 1441 #+ Rito 707 of Ideal 3407 7075 +  
**Mytty Natural** S A V Blackcap May 4136  
**17935475** Mytty Primrose Lady 1025 Mytty Thunderstruck +  
 HCC Onward 7773 Mytty Primrose Lady U267  
**RF Princess Sue 043** Connealy Onward #  
**16728412** R F Princess Sue 319 # Sitz Beebe Queen 259R  
 Mc Bee WMR Super X 745 #  
 L A Princess Sue 826

BW	WW	Milk	YW	%IMF	REA	Fat	\$B
+8	+51	+29	+93	1+.30	1+.69	1+.015	+123.64
CED	BW	205 ADJ	NR	DAM NR	365 ADJ	YR	\$W
+10	78	549	100	7-97	1218	100	+50.99

• Suitable for heifers

Lot  
61

# Ridl Identity 8206

Calved: 3/19/2018 19292150 Tattoo: 8206 Bull

Koupals B&B Identity # Sitz Upward 307R #  
**Isaak Identity 6013** B&B Erica 605 #  
**18738123** Isaak Merle 900 HARB Pendleton 765 J H #  
 Connealy Final Product # Isaak Merle 508  
**Isaak Erica Lassie 413** Connealy Product 568  
**18160009** Isaak Erica Lassie 844 Ebonista of Conanga 471 #  
 EVENSON New Frontier 5107  
 Isaak Erica Lassie 307

BW	WW	Milk	YW	%IMF	REA	Fat	\$B
+3.0	+61	+33	+107	+17	+40	+0.053	+131.68
CED	BW	205 ADJ	NR	DAM NR	365 ADJ	YR	\$W
-3	86	837	114	3-108	1229	91	+60.44

Lot  
59

# Ridl Cash 862 [DDP]

Calved: 2/4/2018 19297690 Tattoo: 862 Bull

Barstow Cash # [DDF] Sitz Dash 10277 # [DDF]  
**JAR Cash 993 420 +** Barstow Queen W16 [DDF]  
**18022477** JAR Miss Countess 6155 993 DDR First Edition 6027  
 A A R Ten X 7008 S A # [DDF] JAR Miss Countess 364 6155 #  
**Ridl Fortune 303 #** Mytty In Focus # [RDF-DDF]  
**17536242** RF Fortune 117 [DDF] A A R Lady Kelton 5551 #  
 TC Aberdeen 759 # [DDF]  
 R F Fortune 872

BW	WW	Milk	YW	%IMF	REA	Fat	\$B
-.1	+53	+36	+95	+53	+86	+0.004	+141.26
CED	BW	205 ADJ	NR	DAM NR	365 ADJ	YR	\$W
+11	75	665	93	4-103	1131	83	+60.11

• Suitable for heifers

Lot  
62

# Ridl Identity 8213 [DDP]

Calved: 4/6/2018 19292162 Tattoo: 8213 Bull

Koupals B&B Identity # [DDF] Sitz Upward 307R # [DDF]  
**Isaak Identity 6013** B&B Erica 605 # [DDF-OHF]  
**18738123** Isaak Merle 900 HARB Pendleton 765 J H # [DDF-OHF]  
 WAR Upward 801-229 Isaak Merle 508  
**Isaak Traveler 442** Sitz Upward 307R # [DDF]  
**18157793** Isaak Traveler 119 WAR Elvina 658-801  
 Apex In Focus 296  
 Isaak Traveler 828

BW	WW	Milk	YW	%IMF	REA	Fat	\$B
1-1.0	1+58	1+27	1+98	N/A	N/A	N/A	N/A
CED	BW	205 ADJ	NR	DAM NR	365 ADJ	YR	\$W
1+11	80	706	100	3-103	1341	100	+58.36

• Suitable for heifers



Lot  
**63**

# Ridl Spur 8120 [OHF]

Calved: 3/3/2018 19143020 Tattoo: 8120 Bull

Connealy Stimulus 8419 #  
**Connealy Spur**  
**17304082** Jazza of Conanga 8594 #

Sitz Madison 10477 #  
**Vermilion Lady 0006**  
**16628696** Vermilion Lady 8010

H A Power Alliance 1025 #+  
Black Creesa of Conanga 5332  
TC Grid Topper 355 #+  
Jemma of Conanga 5614  
Sitz Upward 307R #  
Sitz Everelda Entense 505  
Baldrige Nebraska 901 #  
Vermilion Lady 6036

BW	WW	Milk	YW	%IMF	REA	Fat	\$B
+7	+64	+25	+106	+71	+95	+0.00	+141.37
CED	BW	205 ADJ	NR	DAM NR	365 ADJ	YR	\$W
+8	65	637	89	7-98	1139	91	+67.70

- Suitable for heifers

Lot  
**65**

# Ridl Identity 8209 [OHP]

Calved: 4/5/2018 19292147 Tattoo: 8209 Bull

Koupals B&B Identity #  
**Isaak Identity 6013**  
**18738123** Isaak Merle 900

Koupals B&B Identity #  
**Isaak Blackbird 405**  
**18176059** Isaak Blackbird 463

Sitz Upward 307R #  
B&B Erica 605 # [OHF]  
HARB Pendleton 765 J H # [OHF]  
Isaak Merle 508  
Sitz Upward 307R #  
B&B Erica 605 # [OHF]  
Petrys Bando 051  
C H Blackbird 6498

BW	WW	Milk	YW	%IMF	REA	Fat	\$B
+5	+46	+29	+83	N/A	N/A	N/A	N/A
CED	BW	205 ADJ	NR	DAM NR	365 ADJ	YR	\$W
+8	82	676	92	3-103	1230	92	+46.07

- Suitable for heifers

Lot  
**64**

# Ridl Identity 8203

Calved: 3/19/2018 19292155 Tattoo: 8203 Bull

Koupals B&B Identity #  
**Isaak Identity 6013**  
**18738123** Isaak Merle 900

L A Dateline 57  
**Isaak Lady Blue 459**  
**18157802** Isaak Lady Blue 605

Sitz Upward 307R #  
B&B Erica 605 #  
HARB Pendleton 765 J H #  
Isaak Merle 508  
W M R Dateline 210  
L A Blackbird 501  
G A R Grid Maker #+  
Farview Lady Blue 8130

BW	WW	Milk	YW	%IMF	REA	Fat	\$B
+4	+48	+22	+82	N/A	N/A	N/A	N/A
CED	BW	205 ADJ	NR	DAM NR	365 ADJ	YR	\$W
+8	82	671	91	3-89	1257	94	+43.34

- Suitable for heifers



A cold winter at Ridl Angus

## ~ Notes ~



Ritchey's dual-colored, engravable tags allow for permanent numbering.



**Ritchey** EST. 1964  
Livestock ID  
1-800-EAR-TAGS







rangus-Channel 2

2/8

2018-01-28 18:16



Channel 2





~ Notes ~

View Sale Online at [www.dvauction.com](http://www.dvauction.com)

Thank You Sponsors



RANDY L. KINZEL  
Commercial Sales

SAX MOTOR CO.  
52 21st St E  
Dickinson, ND 58601  
[www.saxmotor.com](http://www.saxmotor.com)

Toll Free: 1-800-483-9430  
Buy: 701-483-4411  
Fax: 701-483-4625  
Cell: 701-290-0363



HEALTH & WELLNESS  
CHIROPRACTIC  
quality - affordable - health care

Tyler Leintz, D.C.

448 21st St. W. Suite D-2  
Dickinson, ND 58601

(701) 483-6325  
Fax: (701) 483-6327



**DAS**  
Deans AI Service, Inc.

Bob Merten 605-920-0256

[breederbob@deansaiservice.com](mailto:breederbob@deansaiservice.com)



**American**  
BANKING • INVESTMENTS • TRUST • INSURANCE

Right here. Right for you.  
[weareamerican.com](http://weareamerican.com)

GENERATIONS OF BEING

FIRST IN  
the FIELD



TOP-YIELDING CORN, SOYBEAN  
AND SUNFLOWER SEED

1-888-6THUNDER [www.thunderseed.com](http://www.thunderseed.com)

Landis Hay Grinding



701.690.9223

Trent Landis  
OWNER/OPERATOR

868 22nd St. W • Dickinson, ND 58601  
[thaygrinding@outlook.com](mailto:thaygrinding@outlook.com)

**BURGH DUFF  
AVIATION**

Ludlow, SD  
605.641.4555



**SOUTHWEST AG  
INC.**

301 6<sup>th</sup> Street NE  
Bowman, ND 58623

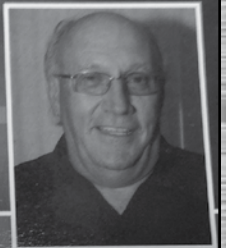
FAMILY BUSINESS, FAMILY  
VALUES

Office: 701-523-4845  
[southwestagnd.com](http://southwestagnd.com)

**Nodak  
Insurance Company**

Cliff Weiler

Career Agent, LUTCF  
[cweiler@nodakins.net](mailto:cweiler@nodakins.net)



**PAYBACK**

NUTRITIONAL FORMULATIONS FROM CHS

**MARTINSON AG  
RISK MANAGEMENT**

Risk Management Made Simple

Martinson Ag Risk Management is dedicated to taking your farming operation to the next level with advisory, trading, crop insurance and Livestock Risk Protection. Let our qualified team provide you with solutions for your farming operation.

Contact us for more information at: 701-205-4200  
[www.martinsonag.com](http://www.martinsonag.com)

There is risk involved in trading futures and/or options.

**West Plains Inc.**

BEACH • BOWMAN • DICKINSON • HETTINGER, ND



**RIDL  
ANGUS**



DICKINSON, ND

11425 34TH ST SW  
DICKINSON, ND



*20th annual*

# PRODUCTION

Tuesday

**MAR 5**

*sale*

STOCKMEN'S WEST | DICKINSON, ND  
2:00PM (MST)